

TROUBLESHOOTING GUIDE

The following checks will assist in the correction of most problems which you may encounter with your set. Before going through the check list below, first check the following points.

The power cord must be connected firmly.

Should any problem persist after you have made these checks consult your nearest dealer

Symptom	Possible Causes (and Remedies)
RADIO RECEPTION	
No radio reception	The MODE selector has not been set to the correct position. Adjust the VOLUME button "VOL+" . "LINE OUT" switch system selection "OFF"
CD PLAYER OPERATION	
Disc does not play Or sound skips	Reload the disc with the label side up Clean the disc.
Sound skips	Change the installation location Press the Reset button.
Unit is not working.	Press the STOP button and then program the tracks.
GENERAL	
Programmed disc play will not function	The AC power cord is not connected to an AC wall outlet. Check that the power cord is connected firmly. Push the power button from the "OFF" position to the "ON" position.
No sound output.	Turn VOLUME knob clockwise. Press the Reset button. "LINE OUT" switch system selection "OFF"
Severe hum or noise.	The TV or VCR is too close to the stereo system. Separate from the TV or VCR.
Display garbled, non-functional.	Turn Off the power to restart.

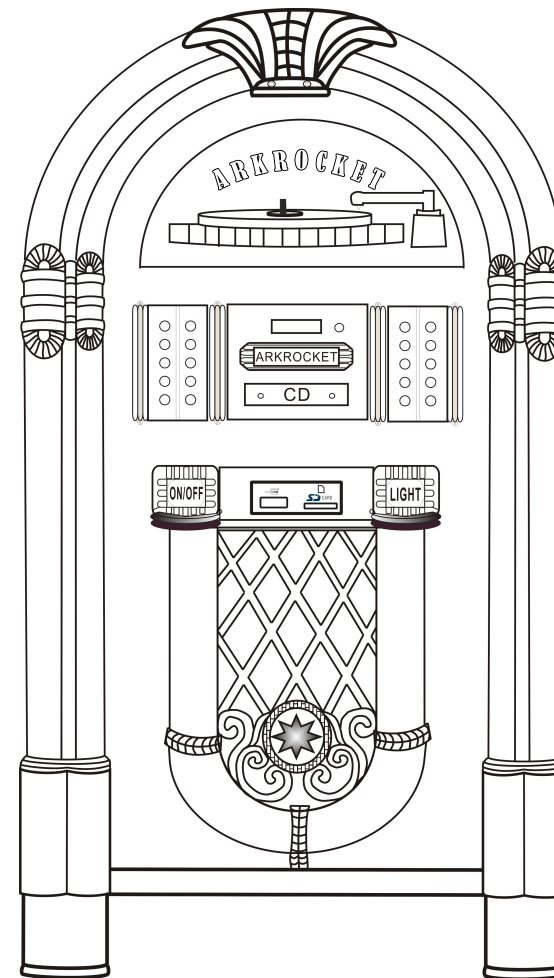
THE OPERATING INSTRUCTIONS REFLECT THE CURRENT TECHNICAL SPECIFICATION OF THIS PRODUCT AT TIME OF PRINT.
WE RESERVE THE RIGHT TO CHANGE SPECIFICATIONS FOR TECHNICAL REASONS WITHOUT PRIOR NOTICE.

CLOCK/FM/CDMP3/BT/USB/SD/PH/AUX/LINE OUT JUKEBOX



Instruction Manual

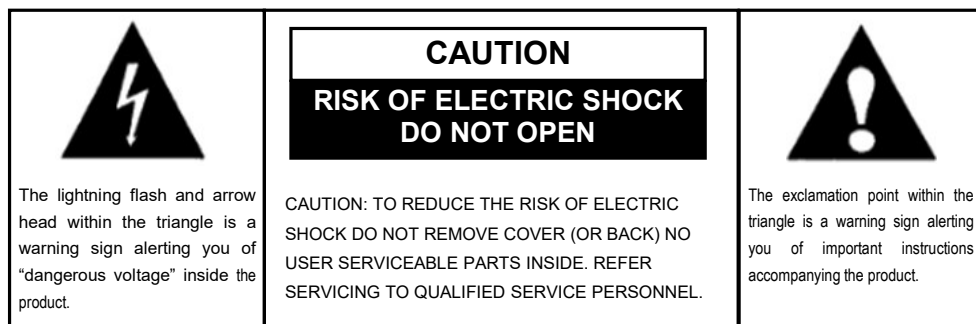
Taurus Jukebox -Classic - AR01-02PH-CLA



Questions, problems, missing parts?
Before returning to the store, contact Customer Service
www.Arkrocket.com

SAFETY INSTRUCTIONS

WARNING: TO PREVENT FIRE OR SHOCK HAZARD, DO NOT EXPOSE THIS APPLIANCE TO RAIN OR MOISTURE.



IMPORTANT SAFETY INSTRUCTIONS

1. Read instructions - All the safety and operating instructions should be read before the appliance is operated
2. Retain instructions - The safety and operating instructions should be retained for future reference.
3. Heed Warnings - All warnings on the appliance and in the operating instructions should be adhered to.
4. Follow instructions - All operation and use instructions should be followed.
5. Water and Moisture - The appliance should not be used near water; for example, near a bathtub, washbowl, kitchen sink, laundry tub, in a wet basement, or near a swimming pool, and the like.



WARNING: Keep batteries out of reach of children. Swallowing may lead to serious injury or death in as little as 2 hours due to internal burns. If swallowed, go straight to a hospital emergency room. Dispose of used batteries immediately.

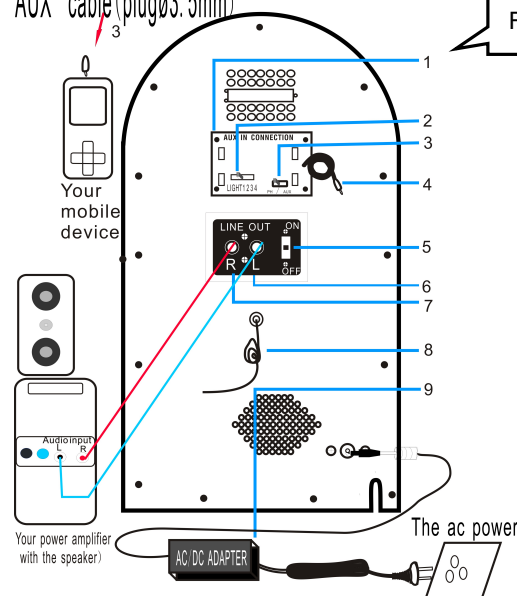
AUX IN and LINE OUT operation:

AUX IN- (If equipped with, please refer to the, otherwise, ignore).

1. On the display lens "PH", under the condition of product on the back "PH/AUX " switch choose "AUX".
2. Plug the AUX in lead at the back of the jukebox into your iPhone/iPod or other MP3 device. The AUX lead needs to be plugged into the earphone socket of your iPhone/iPod or other MP3 device.
3. Ensure line out switch at the back of the juke box is in the "AUX" position when using AUX in.
4. You can then begin playback from your iPhone/iPod or MP3 device.

If you cannot hear anything, turn up the volume on the juke box.

AUX cable (plugø3.5mm)



- 1) MP3 box buckle bit
- 2) LIGHT MODE(Color Flash 1/2/3/4)
- 3) PH/AUX:PHONO/AUX Conversion system
- 4) AUX IN:Player audio input cable
- 5) ON/OFF: The line out switch system
- 6) LINE OUT -L
- 7) LINE OUT- R
- 8) FM Antenna
- 9) Power adapter

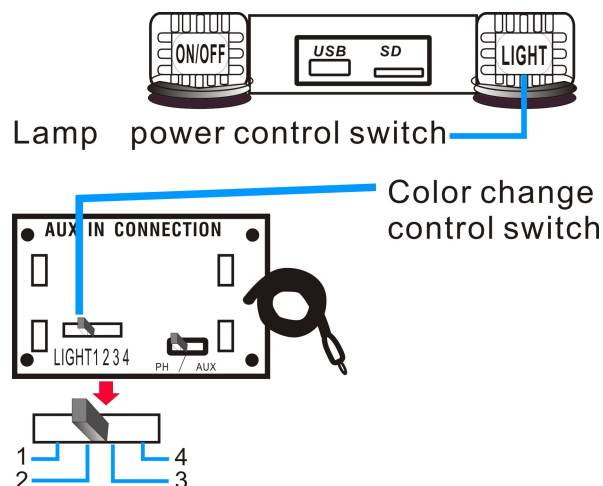
Note:AUX IN play music, need to make sure PHONO needle return back to needle on shelf.(Otherwise may be abnormal).

LINE OUT- (If equipped with, please refer to the, otherwise, ignore).

1. "LINE OUT" switch system selection "ON".
 2. Inserted the audio cable a jukebox "LINE OUT" jack, audio signal through the connection to an external amplifier device through the left/right channel.
- After the connection is successful, through the external power amplifier plays music.



TURNING ON THE LIGHTING EFFECTS



To turn on the LED lighting effects simply press the “**LIGHT**” button. All the LED lighting effects will illuminate.

The Jukebox features 4 modality changing LED light tubes that are displayed on the Jukebox parts diagram as items figure 4-2. There are also several other multicoloured LED lighting effects that are featured in the CD player and USB/SD compartment and at the bottom of the speaker panel.

NOTE: The lighting effects operate independently of the POWER button. The LIGHT button controls the power to the lighting effects and the on the back of the machine “**LIGHT 1 2 3 4**”.

On the rear of the Jukebox, there is an LED Light Mode Switch (Number 4 On the Jukebox with parts diagram item 2), Switch “**LIGHT 1, 2, 3, 4**” on the back panel to select 4 different LED light change modes.

To turn **OFF** the lighting effects all together simply press the “**LIGHT**” button once again, and all lighting effects will no longer be illuminated.

6. The appliance should always be used or stored on a flat stable surface indoors.
7. Ventilation - The appliance should be situated so that its location or position does not interfere with its proper ventilation. For example, the appliance should not be situated on a bed, sofa, rug, or similar surface that may block the ventilation openings; or placed in a built-in installation, such as a bookcase or cabinet that may impede the flow of air through the ventilation openings.
8. Heat - The appliance should be situated away from heat sources such as radiators, heat registers, stoves or other appliances (including amplifiers) that produce heat.
9. Power Sources - The United States is 120 vac-60Hz; Japan is 100 vac-60Hz. Power-Cord Protection - Power supply cords should be routed so that they are not likely to be walked on or pinched by items placed upon or against them.
10. Power cords should be regularly inspected and if any damage is discernible then stop using and consult a qualified electrical technician.
11. This item is fitted with a 3amp fuse only.
12. Cleaning - The appliance should be cleaned only as recommended by the Manufacturer.
13. Non use Periods - The power cord of the appliance should be unplugged from the outlet when left unused for a long period of time.
14. Object and Liquid Entry - Care should be taken so that objects do not fall and liquids are not spilled into the enclosure through openings. Switch off immediately at power source if the item comes into contact with liquids and refer to a qualified electrical technician.
15. Refer to a suitable qualified technician if the appliance is damaged, needs servicing or has been dropped.
16. Servicing - The user should not attempt to service the appliance beyond general cleaning and changing of stylus.
17. This appliance / product is not intended for use by persons (including children) with reduced physical, sensory or mental capabilities, or lack of experience and knowledge, unless they have been given supervision or instruction concerning the use of the appliance by a person responsible for their safety. Children should be supervised so that they do not play with the appliance.

SETTING THE CORRECT TIME

➤ American :

version: When the Jukebox enters standby mode the LCD display panel will illuminate and the time "12:00" will appear on the LCD display panel.

➤ European version:

When the Jukebox enters standby mode the LCD display panel will illuminate and the time "00:00" .

● For example, the American version of the operation:

To set the time, simply press the "**PROG**" button on the control panel or remote control (No. 22 on the Control panel diagram or No. 6 on the remote control diagram) and hold this button down for 3 -5 seconds, until "12-H" is displayed on the screen ("12-H" indicates that the time will be set in 12 hour format), Then, press "▶▶I" or "I◀◀" can choose 12 or 24 hour format; Once "12-H" is displayed on the screen press the "PROG" button again. The display will revert to "00:00" on the display, however, with the "12" flashing. Use the "▶▶I" and/or "I◀◀" buttons on the control panel or the "I◀◀" and/or "▶▶I" buttons on the remote control (No. 3 and 6 on the control panel diagram or remote control diagram), to select the correct hour (keep in mind it will be set it 12 hour time), then press the "PROG" button to confirm. The second "00" will now be flashing. Use the "▶▶I" and/or "I◀◀" buttons or the "I◀◀" and/or "▶▶I" buttons to select the correct minutes, then press the "PROG" button to lock this figure in.

NOTE: The time will only be saved in The Jukebox The when it is working or standby mode. If you wish to save the set time into your Jukebox, do not press the POWER button (No. 2 on the control panel diagram) to turn the unit off, simply press the ON/OFF button (No. 3 on the control panel diagram) to set the Jukebox to standby. If the POWER button (No. 2 on the control panel diagram) is used to turn the Jukebox off, it will erase the time setting and the above process will need to be repeated in order to reset the correct time the next time it is turned on.

➤ The American and European editions of The clock set operation method is The same.

(16) NEXT/F.F: fast forward, press to go to the next track or fast forward through a track. You can then press the playback button to start playback.

(17) VOL + : increase the voice, press the button repeatedly or press once and hold down until you reach the desired volume level.

(18) Play/pause button: press to play or pause a track.

Product basic specification description

RECEIVE FREQUENCY RANGE: FM 87.5 – 108MHz

MAINS INPUT VOLTAGE: 100-240V~ 50/60Hz 1.8A

OUTPUT VOLTAGE: DC 13V  5A

POWER CONSUMPTION: 65W

Power amplifier channel type: 2.0 channel

REMOTE CONTROL BATTERY: CR2025 3V Lithium Battery

DIMENSIONS(CM): 103 x 57 x 30 (approx.)

NET WEIGHT: 21.5kg (approx.)

Playable File Requirements

MP3/WMA Music File requirements.

MP3/WMA file compatibility with this unit is limited as follows:

- Frequency: within 32 to 48 kHz.
- Bit rate: within 32 to 320 kbps (MP3), 40 to 192kbs (WMA).
- Maximum files: under 999.
- Maximum folders: under 99.
- File extensions: . mp3 or .wma.

Compatible USB Devices Or SD Cards

- USB Flash Drive: supports USB2.0 or USB1.1.
- File System: FAT16/32 (NTFS file system is not supported).
- Maximum files: under 999.
- External HDD, card readers and locked devices are not supported.

FUNCTIONS ON THE REMOTE CONTROL

- (1) Function: To select between the different functions such as the FM tuner, CD player, USB input, SD input, Bluetooth and Phonograph.
 - (2) Power: the POWER button on the remote control diagram to exit standby mode and enter AM/FM Radio Mode.
 - (3) VOL - : reduce voice, press the button repeatedly or press once and hold down until you reach the desired volume level.
 - (4) Stop : press to stop a track.
 - (5) PREV/F.B: fast back: press to go to the previous track or rewind back through a track. You can then press the play button to start playback.
 - (6) Program: Allows you to program only particular songs of your choice to playback from your music source. (Further info on this function on page 11)
 - (7) Folder-: press to skip to the first track in the previous folder. If the Jukebox is in random ("RAN") mode the folder skipping function will be disabled.
 - (8) Repeat: press to replay one particular song. press the button once repeating ONE song only, press the button twice repeating ALL the songs, press the button three times repeated RANDOM play.
 - (9) Auto: press to Radio Auto-search and save stations
 - (10) ST/Mono/REC:
 - (1) Stereo / Mono Selection in Radio (where available).
 - (2) Is not in broadcast mode, the recording function "REC".
 - (11) PRE-: To playback previous stored radio station
 - (12) MEM/OP/CL: tune the radio to the desired station The Jukebox has a 20 station memory to store the user's favourite radio stations.
- EJECT: When you play the CD, Press EJECT button on the remote control Again to close the CD tray or open the CD tray.
- (13) PRE+: To playback a next stored radio station
 - (14) EQ: To change the Equalizer setting equalizer settings preloaded on to the Jukebox are Flat (FLA), Rock (ROC), Classical (CLA), Pop (POP), and Jazz (JAZ).
 - (15) Folder+: press to skip to the first track in the next folder. If the Jukebox is in random ("RAN") mode the folder skipping function will be disabled.

FUNCTIONS ON THE JUKE BOX

Fig.2-1:

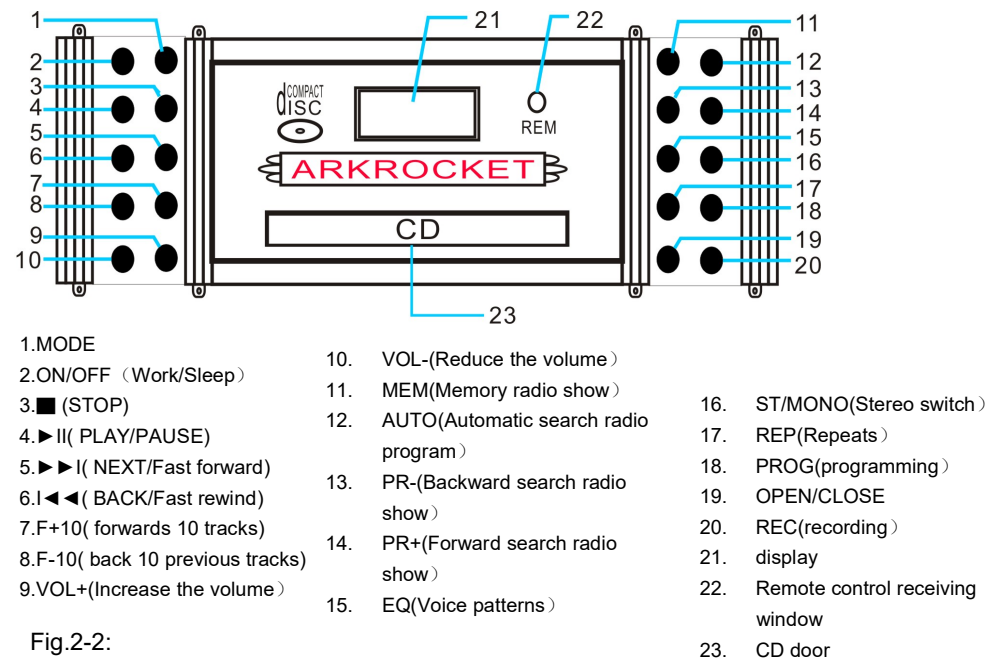
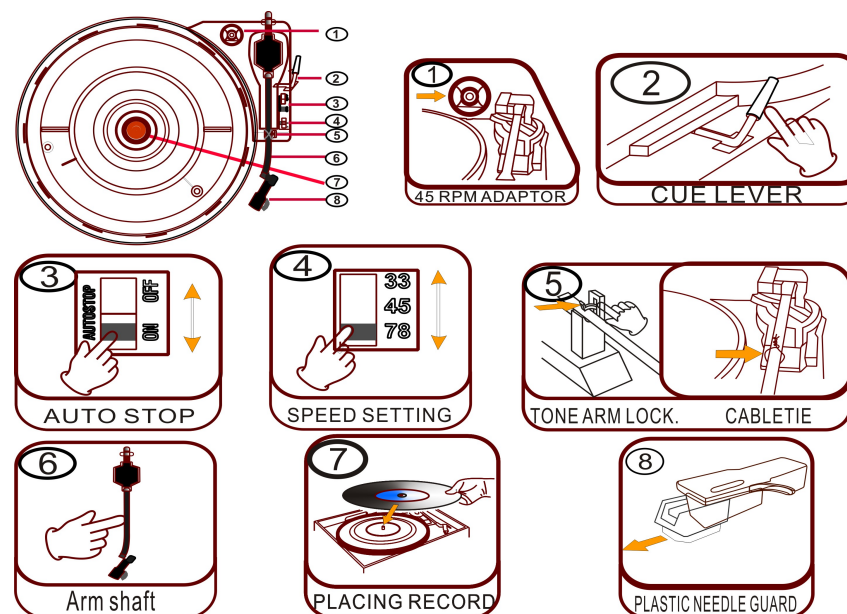


Fig.2-2:



USING THE FUNCTIONS

1. Radio operation (FREQUENCY RANGE FM 87.5-108MHz)

This Jukebox features an inbuilt FM Tuner with auto-search function and a 20 station programmable memory. When using for the first time, press the POWER button and the Jukebox will switch to standby mode. Press the ON/OFF button on the control panel or the POWER button on the remote control to turn the Jukebox ON. The Jukebox should start in FM radio mode, the LCD display will show FM 87.5MHz and the speakers will emit a fuzzy sound (unless the frequency 76MHz contains a radio station in your area). If it does not automatically start in FM radio mode, press the MODE button on the Jukebox or the FUNCTION button on the remote control until FM radio mode is entered.

- A. **Auto search and Save:** By pressing the "AUTO" button (23), the unit will perform an auto-search from the 87.5 MHz upwards to find several stations. The AUTO function will also save the stations into the Memory of the Jukebox. The Jukebox has a 20 station memory to store the user's favourite radio stations which are labelled P01 P20 (Program 1 Program 20). The first station that the tuner finds will be saved into the Jukebox's memory under P01, the second station that the auto-search finds will be saved into the Jukebox's memory under P02, and so on. This will continue until the tuner has found all signals on the bandwidth OR until it has saved stations into all 20 programs.
- B. **Manual search and Save:** Press the "◀◀" or "▶▶" buttons to select a station you like, and then press the "MEM" button to show "P01...", press "F-10 or F+10" to select the location, and then press "MEM" to confirm the storage station. Press "MEM" to display "FM 88.75...MEM" then press "F+10 or F-10" to select the stored station from "F1-F20 to play.

Note:

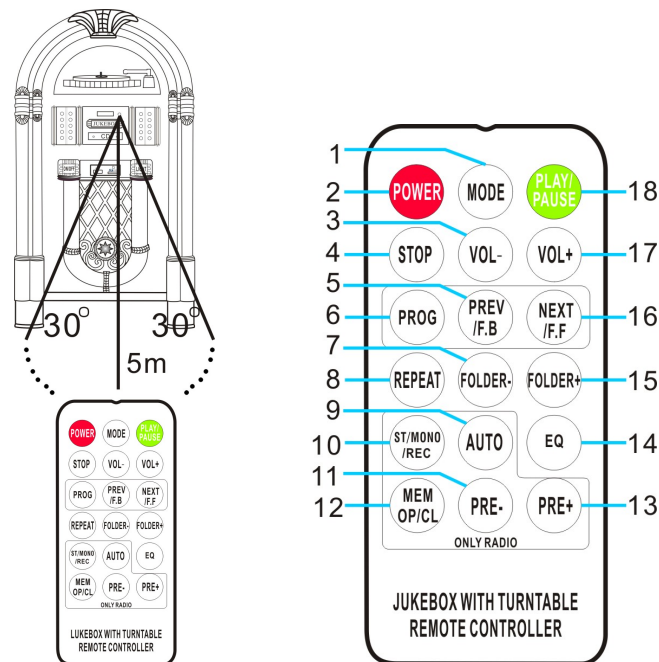
The American version of "FM" frequency, forward or backward, jumped 0.1 MHz; The European version of the "FM frequency, forward or backward, jumped 0.05 MHz; FM antenna, it needs long, put in the radio effect is the best location. (FM antenna in the back of the product).

NOTE: To store 20 stations, there must be 20 strong signal stations locally, otherwise only the actual number of stations can be stored.

2. CD operation (CD should be placed on the tray with the label side up)

- a. Press "MODE" button until led display indicate "- - -", then display will show number of songs and then begin to start playback.
- b. Press "▶||" to select your desire song; fast forward, press to fast forward through a track. You can then press the playback button to start playback.
- c. Press "REP" once to repeat one song, the REP indication at the top left corner on the led display will flash. Press "REP" one more time to repeat all songs in the track and the REP indication at the top left corner on the led display will appear. Press "REP" again to cancel repeat function.
- d. To play songs randomly, press "REP" button until the led display "RAN" on the bottom of the display.
- e. For programming, press "STOP" button to stop playback. Press "PROG" to enter programming mode. The led display will flash and indicate "P 01", select the song that you want to program and then press "PROG" again. Press "Play/Pause▶||" to stop programming and start to playback the programmed songs. This unit can program up to 20 songs (Further info on this function on page 8) .

REMOTE CONTROL DIAGRAM



PROGRAM:

- a. While playing back from a music source, press the stop button.
- b. Press the program button to enter the program mode. The word PROG will flash in the bottom left corner of the display screen. A position number will also be flashing on the screen (eg: p01).
- c. Press the next or back buttons to select which track you want to program into position. When you have made your selection, press the program button to save it.
- d. You can then repeat the same steps to fill in more positions.
- e. When done, press play to begin your music playback. You can do this at any stage once you have programmed the amount of tracks you want.
- f. At any stage during the program process you can press stop to cancel.
- g. 'FUL' will display on the LCD screen when the Max amount of memory location have had been filled.

3. With the point facing down, align the new stylus and gently press it back into place (see Fig. 3).

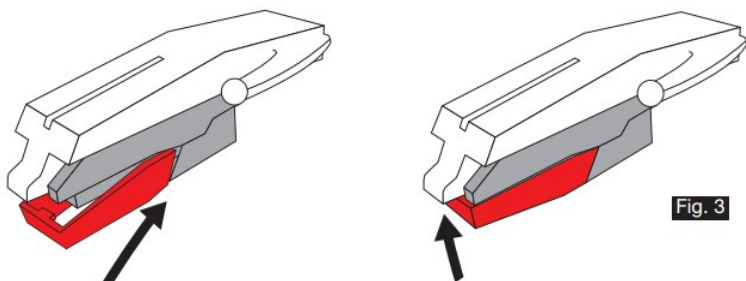
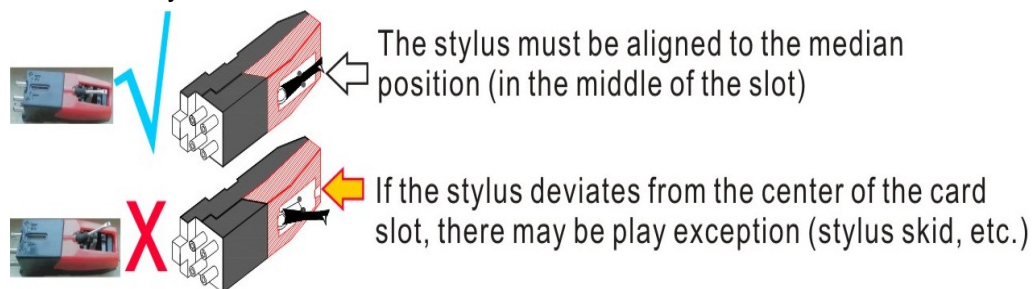


Fig. 3

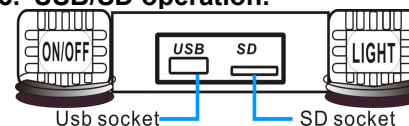
WARNING:

- Do not bend the stylus.
- To avoid injury, do not touch the needle.
- Keep out of reach of children.
- Handle with care as the stylus is delicate. Use of a bent or broken stylus may damage the record and cause malfunction.
- Do not expose the stylus to extreme heat.
- Contact a qualified repair person if you are having difficulties changing the stylus.

NOTE: It may cause the slide needle.



3. USB/SD operation.



- Press **"Mode"** button until led display indicate " USB or SD", then display will show number of folder, then number of songs and start playback.
- Press **"◀◀"** or **"▶▶"** or **"F+/-10"** to select your desire song.
- Press **"REP"** once to repeat one song, the REP indication at the top left corner on the led display will flash. Press the **"REP"** display "REP FOLDER" repeat album; Press **"REP"** one more time to repeat all songs in the track and the REP indication at the top left corner on the led display will appear. Press **"REP"** again to cancel repeat function.
- To play songs randomly, press **"REP"** button until the led display **"RAN"** on the bottom of the display.
- For programming, press **"STOP"** button to stop playback. Press **"PROG"** to enter programming mode. The led display will flash and indicate "P 01", select the song that you want to program and then press **"PROG"** again. Press **"Play/Pause"** to stop programming and start to playback the programmed songs. This unit can program up to 20 songs.

Recording function: in addition to the USB SD broadcast mode, the other player model can be inserted into the U disk or SD card, press the "RES" or "ST/MONO" remote control for the recorded And stored in a USB stick or the content of the SD card.

4. To begin pairing with a Bluetooth device.

- Press **"MODE"** button until LCD display **"bLUE"** and wait for 3 seconds to make the Jukebox speaker discover able.
- Turn on the Bluetooth device and let it automatically search for available Bluetooth devices.
- From the Bluetooth device list, select the device named **"JUKEBOX"**.
- Once the pairing is completed, the Bluetooth will indicated **"connected"**.
To start playback songs from your Bluetooth device. You can control from your Bluetooth device or from the Jukebox itself or remote control(provided).
- Control from the Bluetooth device. Use keys on the display to select songs, volume +/-, play/pause and next/prev function.
- Control from the Jukebox/remote control.
- Once pairing is completed, the song from the Bluetooth device automatically start to playback.
- Press **"VOL+/-"** to control the sound level.
- Press **"Next or BACK"** to select next and previous song respectively.
- Press **"PLAY/PAUSE"** to pause or continue playback.
- To end the pairing, press **"MODE"** button to other functions or turn off the Bluetooth connection from the Bluetooth device.

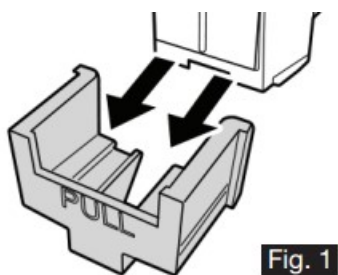
5. Playing Vinyl Records

To play a vinyl record, follow the steps below.

1. Press the ON/OFF (Main Power) button to turn the Jukebox on. The unit will automatically enter standby mode.
2. Press the STANDBY button (No. 25 on the Jukebox parts list or No. 1 on the Remote Control Function List) to wake the Jukebox from standby mode. The unit will automatically enter FM Radio mode.
3. Press the MODE button repeatedly until the LED display shows "PH" for phonograph mode.

IMPORTANT: Before playing a vinyl record, turn down the volume of the Jukebox to avoid possible loud crackling noises. The crackling noises made by the stylus coming into contact with the vinyl record could damage the Jukebox. Wait until the stylus is completely placed on the vinyl record, and then turn up the volume.

4. Open the transparent window by carefully lifting it up from the bottom all the way until it stops. The transparent window will now stay open.
5. Remove the protective cover from the stylus cartridge (see Fig. 1).
6. Set the **AUTOSTOP** switch (No. 20 on the Jukebox parts list) to the ON
7. position. The turntable will now be set to automatically stop after the
8. completion of play of the vinyl record. If the **AUTOSTOP** switch is set to
9. the OFF position, the turntable will not stop automatically.
10. Choose the desired playing speed using the SPEED switch between 33, 45 and 78 RPM



NOTE: When playing a 45 RPM record, use the included 45 RPM adaptor on the record spindle.

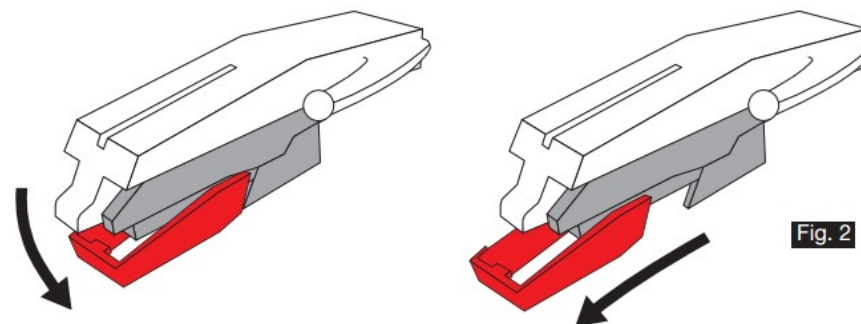
8. Carefully place the vinyl record on the turntable.
9. Unlock tone arm lock by moving it up and away from the tone arm itself.
10. Raise the tone arm using the arm raise lever or carefully with your hand.
11. Place the tone arm vertically over the first track of the record or over the outer edge of the vinyl record. The turntable will start spinning.
12. Lower the stylus onto the vinyl record.
13. Carefully close the transparent window.
14. Adjust the volume by pressing the **VOL-** or **VOL+** button.
15. To stop playing, open the transparent window, lift the tone arm and place it back into the armrest. Secure the tone arm once more by engaging the arm lock. Cover the stylus with the protective cover if needed.

NOTE: Always ensure that the tone arm is secured by the arm lock before transporting the Jukebox.

Replacing the Stylus

It is recommended that the stylus is replaced as soon as you notice a change in the sound quality. Prolonged use of a worn-out stylus may damage the record. Wear and tear on the stylus will be accelerated when playing 78 RPM records.

1. Remove the stylus by pulling it straight down and out, in the opposite direction of the tonearm (see Fig. 2)



4. Find a compatible replacement stylus.

NOTE: If purchasing the replacement stylus in a store, it will be helpful to bring the old stylus with you for your reference. Most good Electronic and Music stores will have replacement styluses.